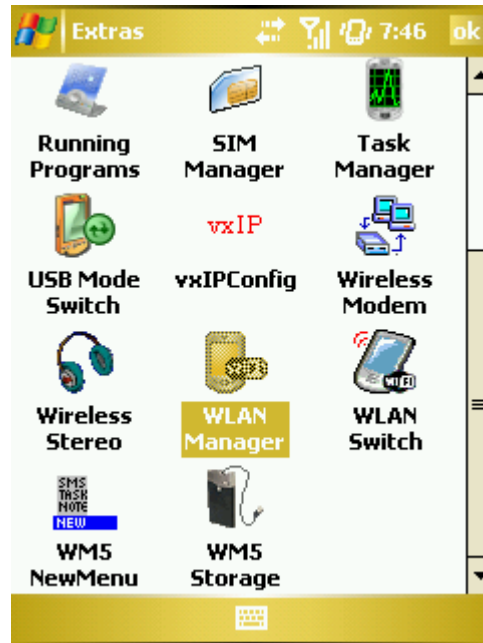
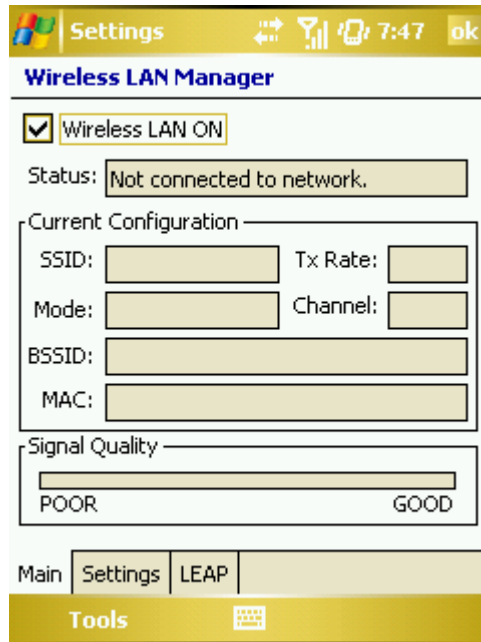


# Internet-capable PDA

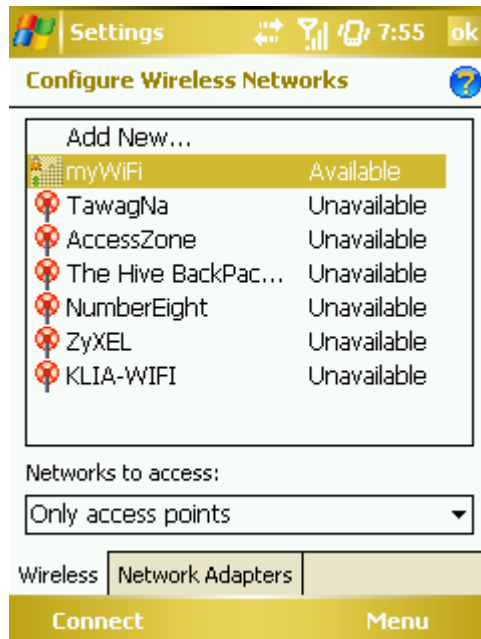
Step 1. Open the WLAN Manager.



**Step 2.** Turn on the Wireless LAN.



**Step 3.** Go to **Tools > Network Card > Wireless** and click on **Add New**



**Step 4.** Configure and follow the settings below and then click on **Next**.  
Use **myWiFi** for the Network name.

Settings 7:57

### Configure Wireless Network

Network name: myWiFi

Connects to: Work

This is a device-to-device (ad-hoc) connection

Cancel Next

**Step 5** Configure and follow the settings below and then click on **Next**.  
Use **accessingwifi** for the Network Key.

Settings 8:00

### Configure Network Authentication

Authentication: Open

Data Encryption: WEP

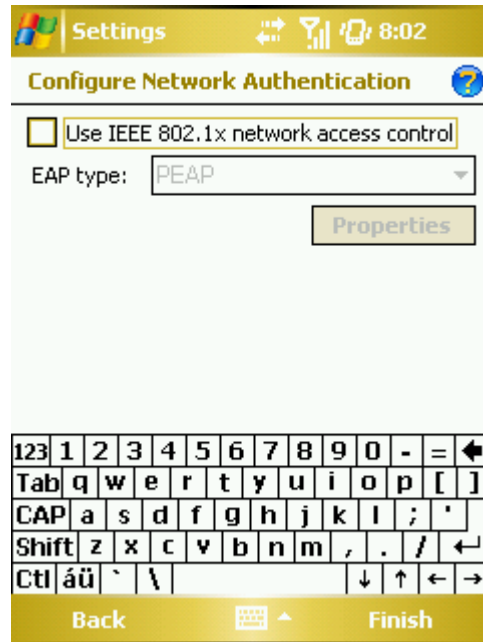
The key is automatically provided

Network key: accessingwifi

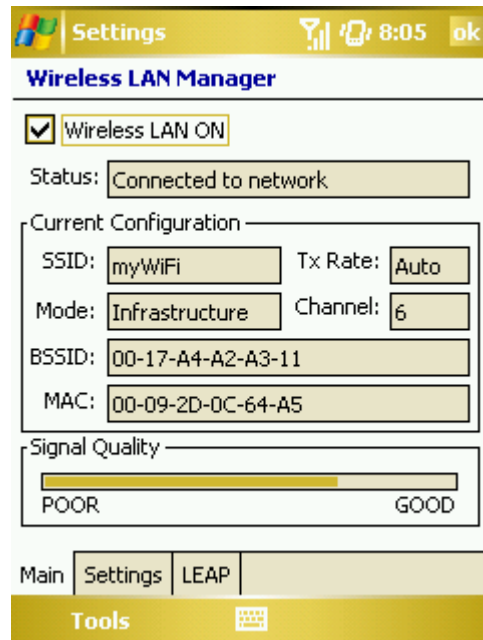
Key index: 1

Back Next

**Step 6.** Configure and follow the settings below and then click on **Next**.

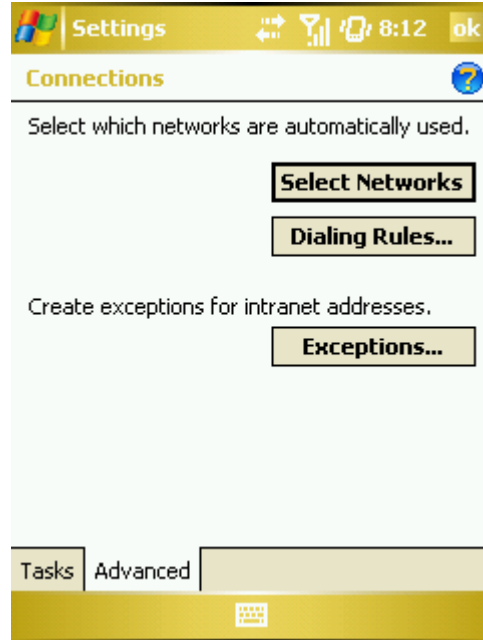


**Step 7.** Click **Finish** and you can now connect to **myWiFi**.

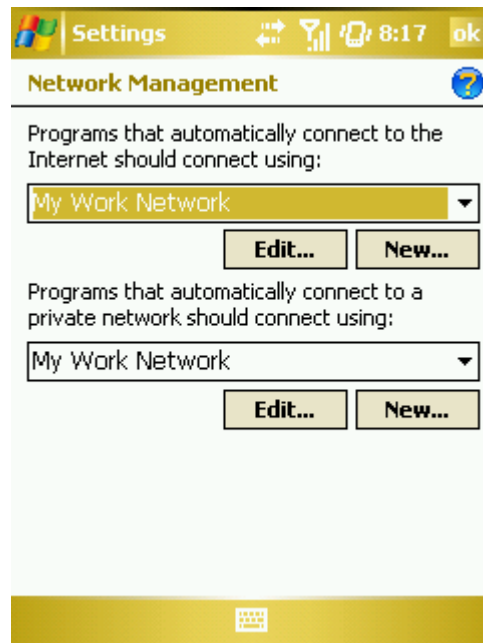


## Browser Settings

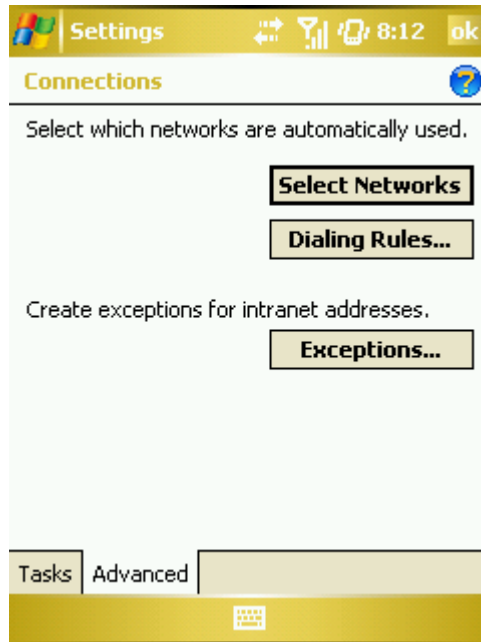
**Step 1.** Go to **Start > Settings > Advanced** and click on **Select Networks**



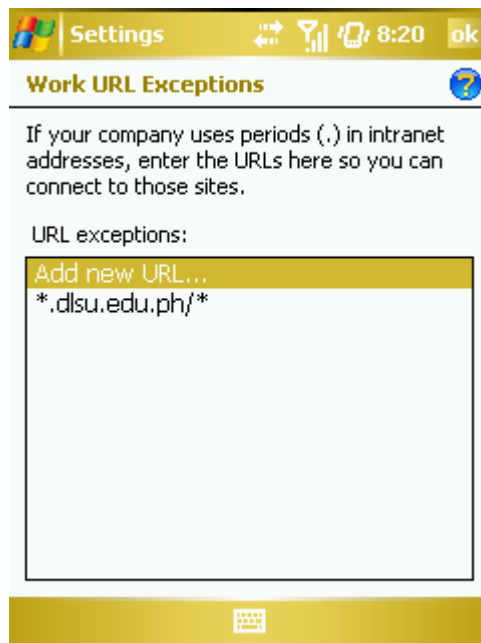
**Step 2.** Configure and follow the settings below and then click on **Ok** to go back to the **Advanced** option.



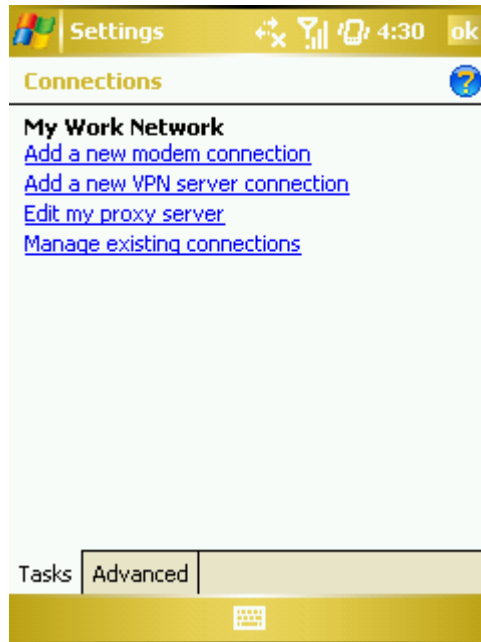
**Step 3.** Click on **Exceptions.**



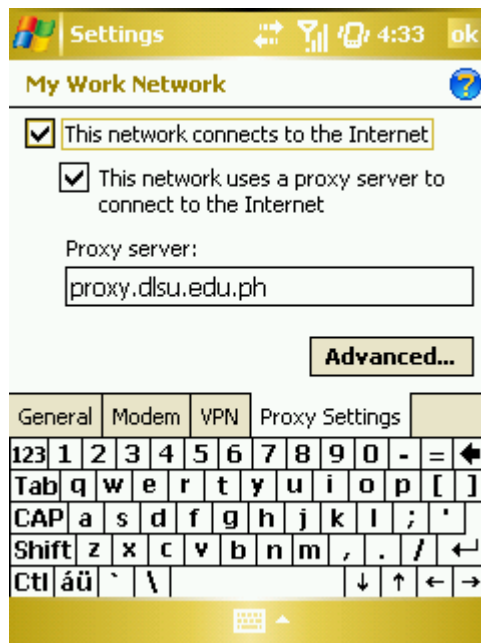
**Step 4.** Click on **Add new URL** and use **\*.dlsu.edu.ph** for the Work URL. Click **Ok** to go back to the **Advanced** option.



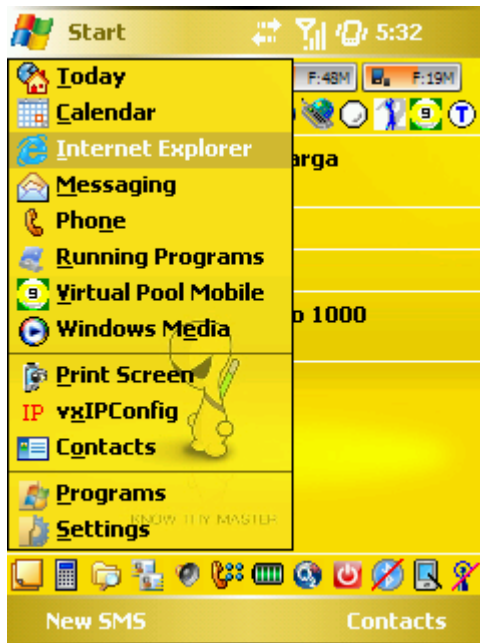
**Step 5.** Click on **Tasks** and then click on **Edit my proxy server**.



**Step 6.** Configure and follow the settings below and then click on **Ok** to save settings. Use **proxy.dlsu.edu.ph** for the Proxy server.



**Step 7.** Open the **Internet Explorer** and enter the URL of the site you wish to visit.



**Step 8.** Enter your MLS account if the proxy requires an authentication.

Username: <your MLS username>

Password: <your MLS password>

Domain: manila

