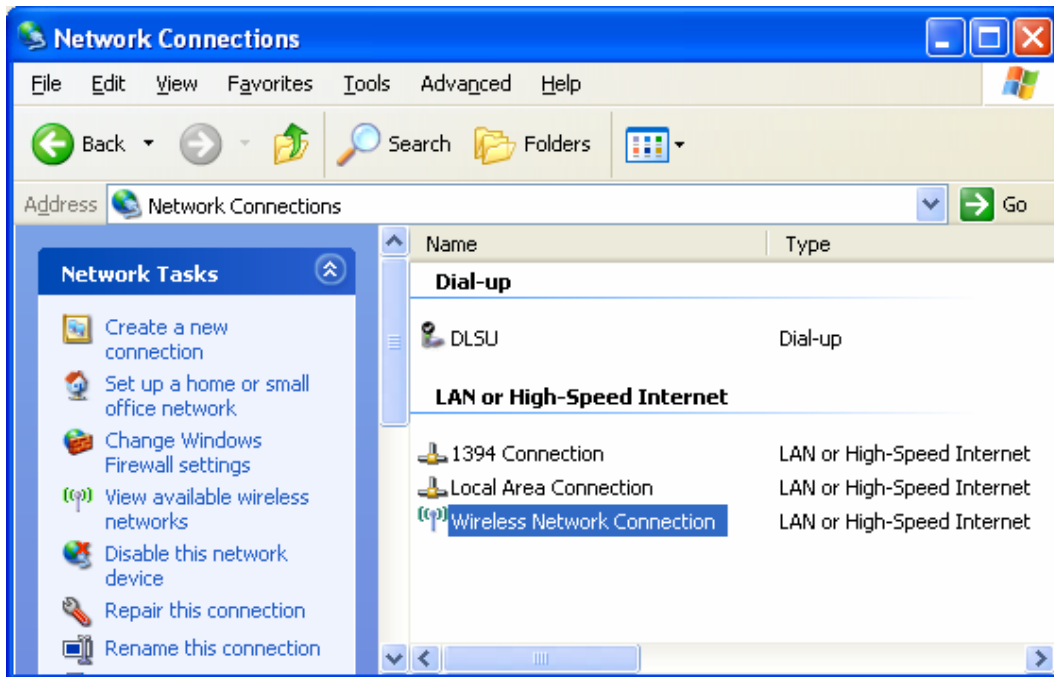
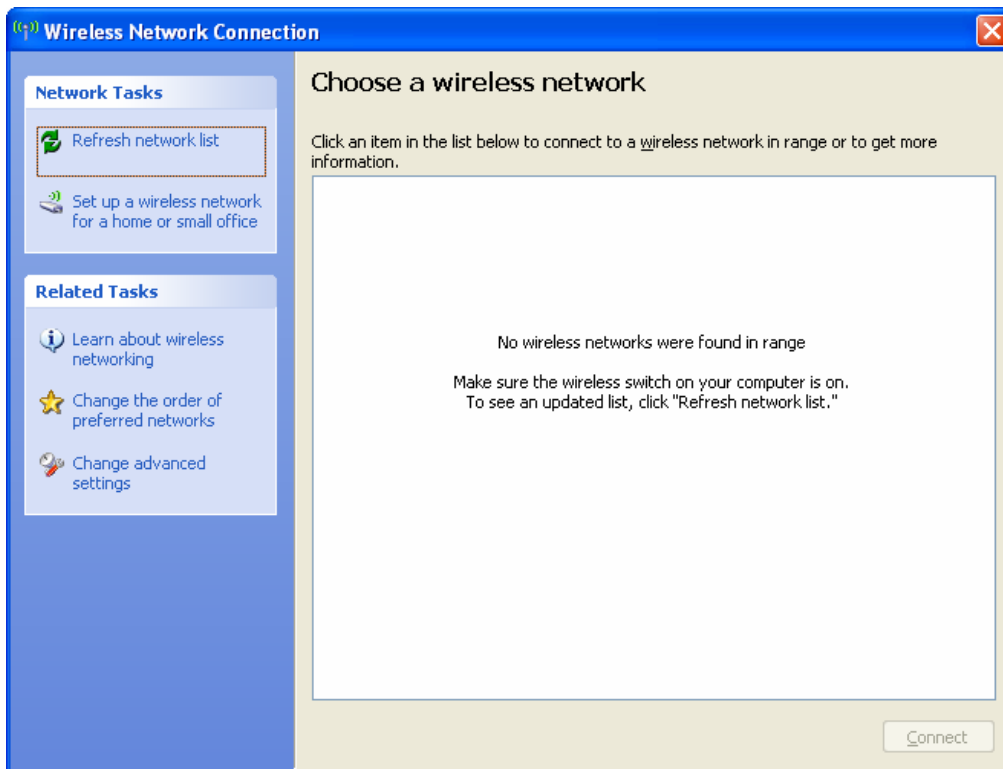


# Internet-capable laptop

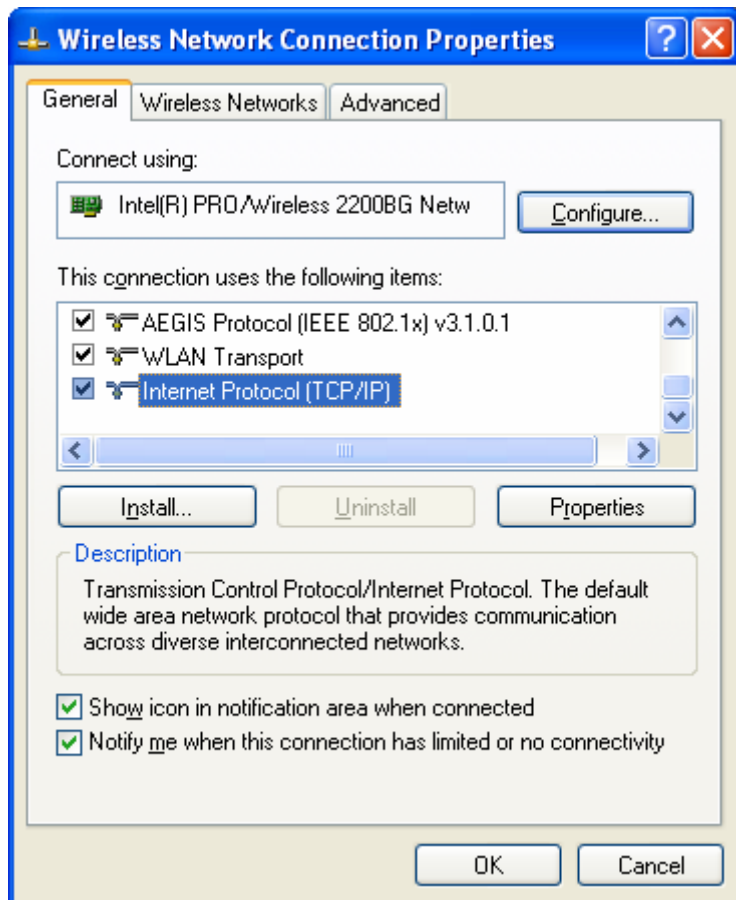
1. Click on **Start > Control Panel > Network Connections** and choose **Wireless Network Connection**.



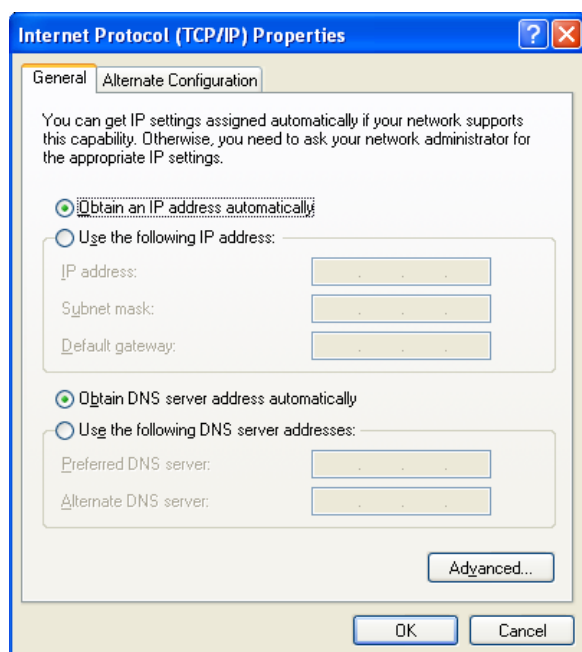
2. Click on **Change Advanced Settings**.

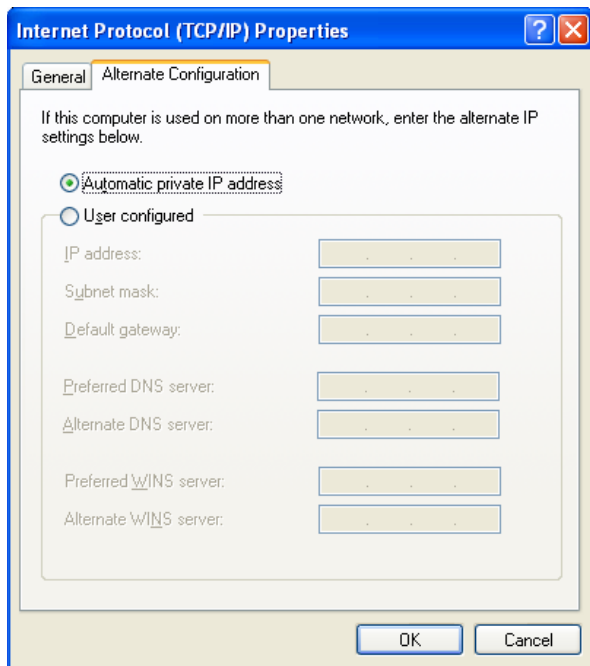


3. Select the **Internet Protocol (TCP/IP)** and then click on **Properties**.



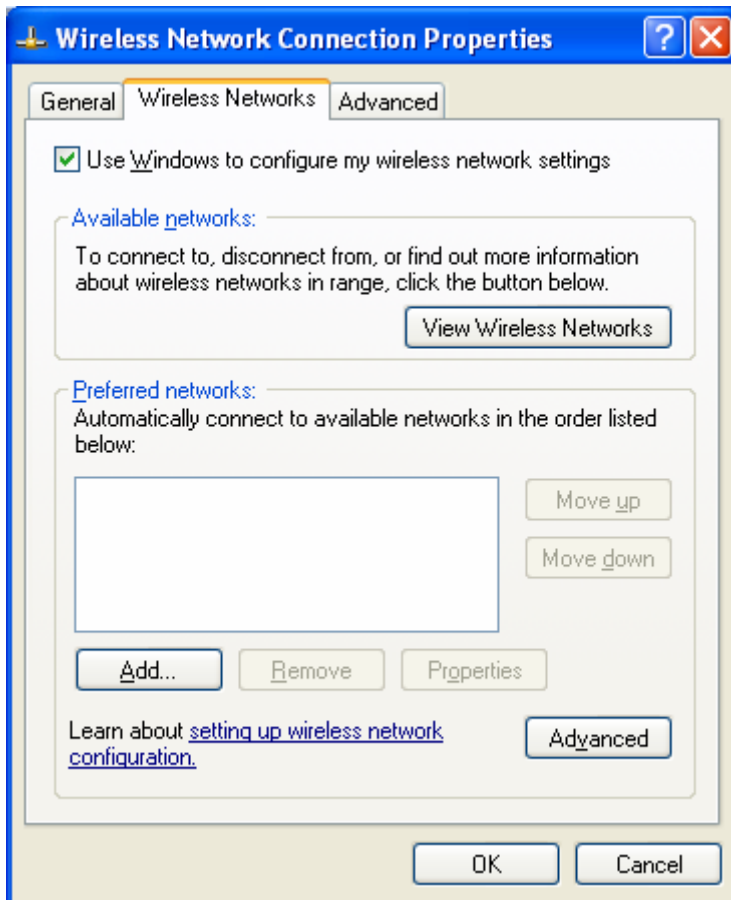
4. Check and follow the **TCP/IP** settings below.



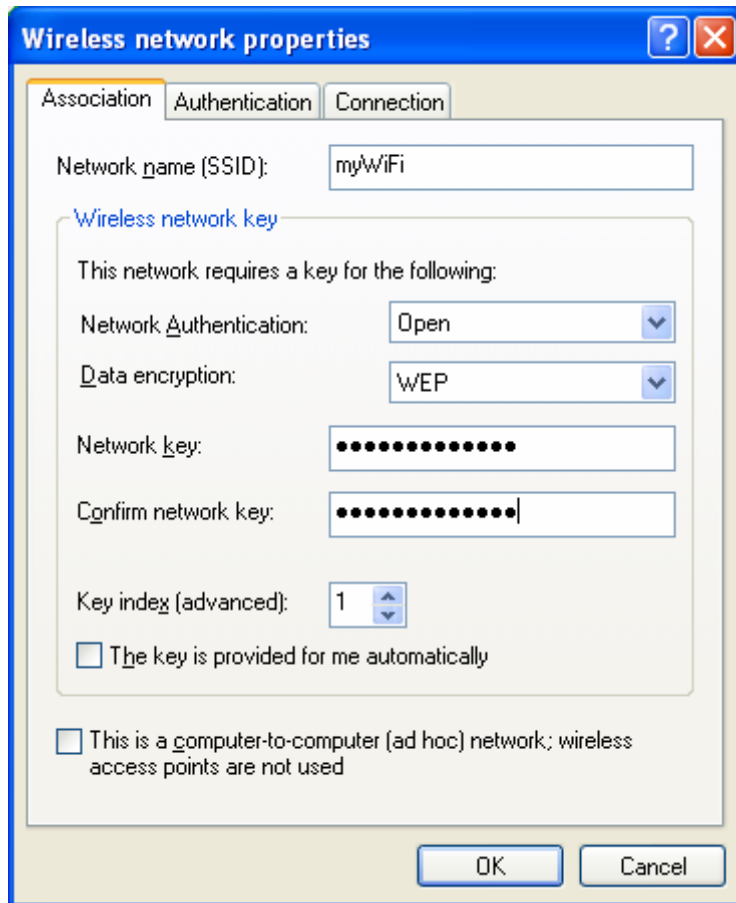


Click **OK** to close and save the **TCP/IP** settings.

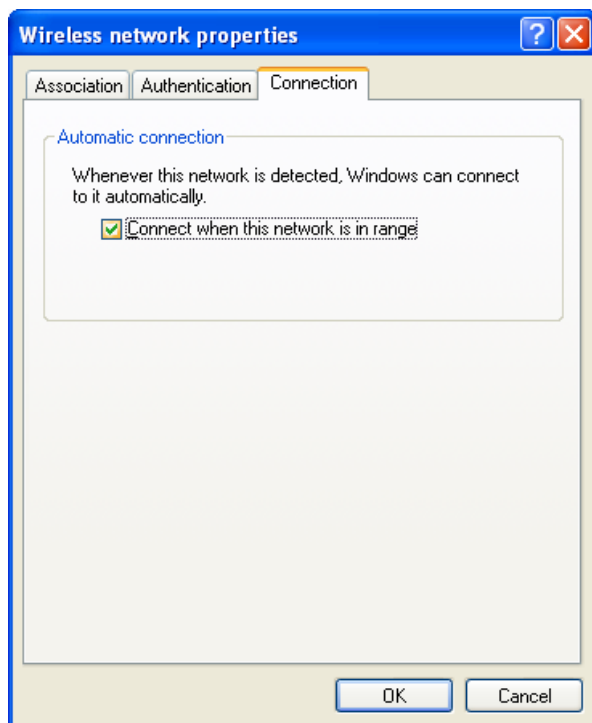
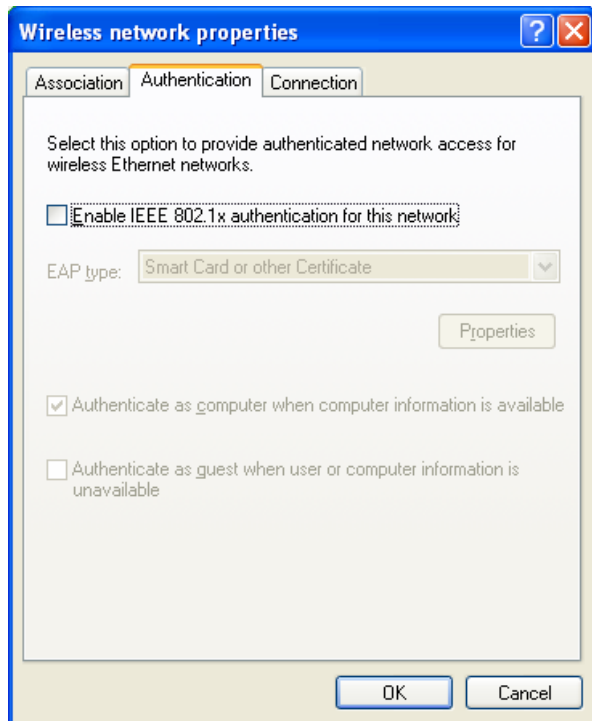
5. Go to the **Wireless Networks** tab and click on the **Add** button.



6. Configure and follow the settings below.
  - Type **myWiFi** on the **SSID** textbox.
  - Select **WEP** for the **Data Encryption**
  - Type **accessingwifi** for the **WEP key**.

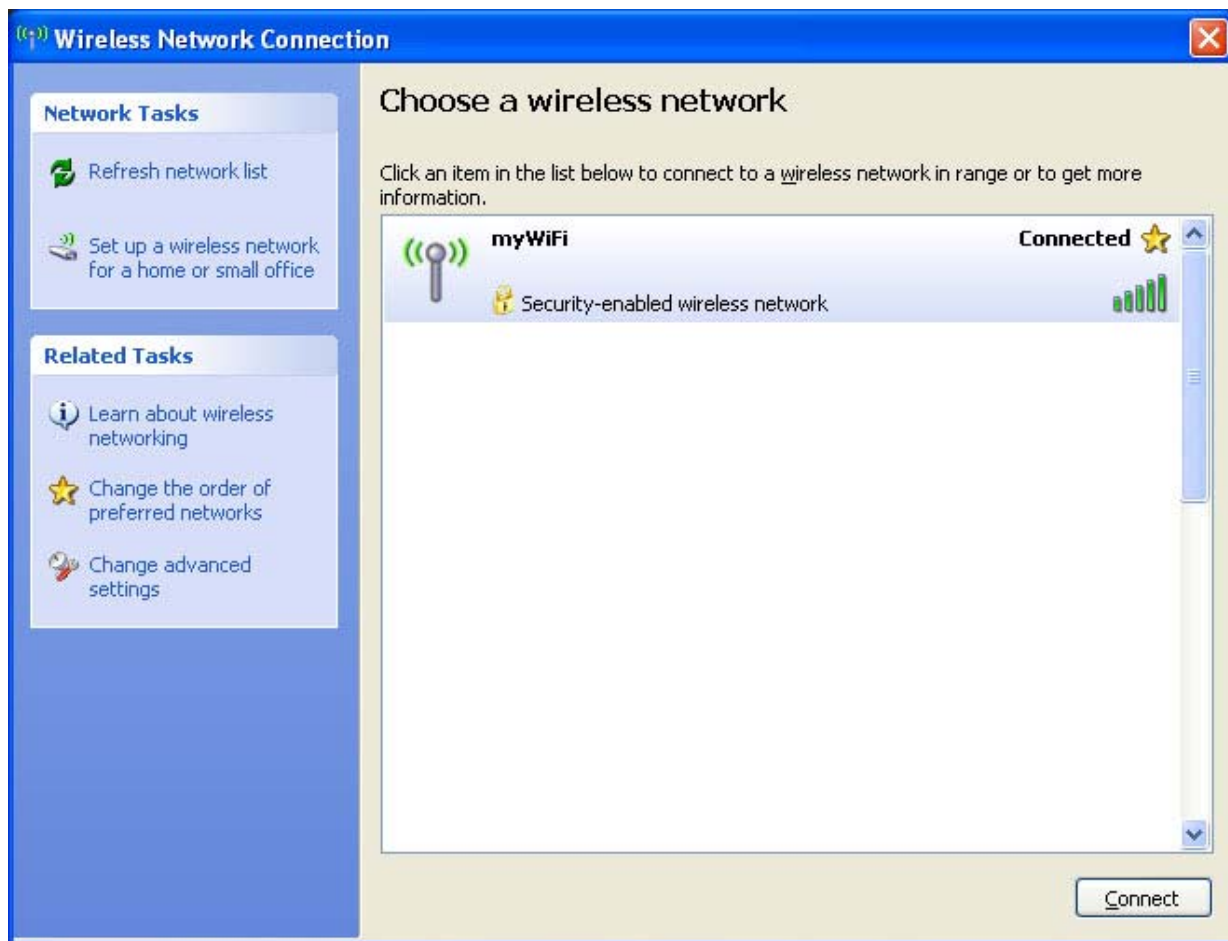


7. On the Authentication tab, uncheck 802.1x authentication.



Click **OK** to save settings.

8. On the **Wireless Networks** tab, click on the **View Wireless Networks** to check your connection status.

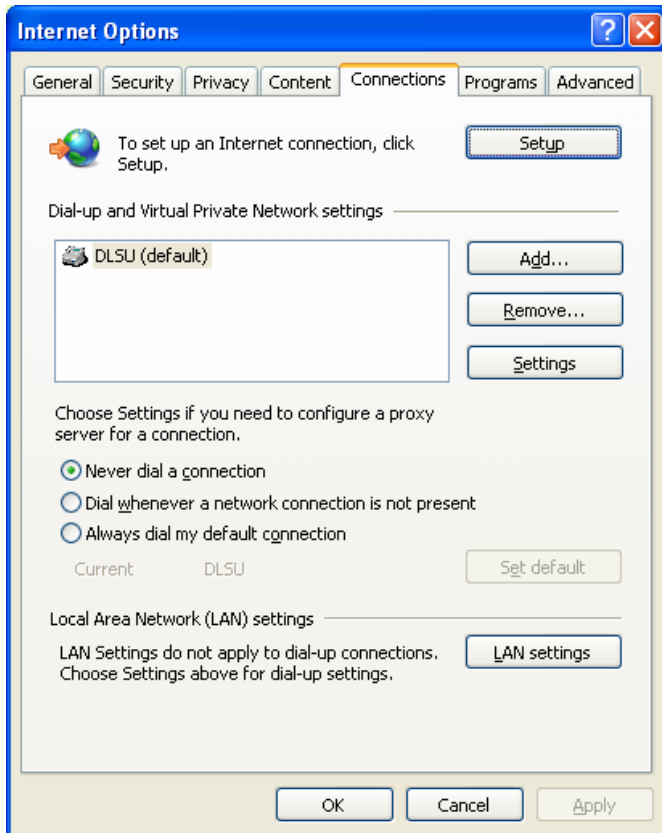


Note: To make sure that you are connected, run **ipconfig** on the **Command Prompt (DOS)**. Your IP Address should be 10.2.xxx.xxx or 10.1.xxx.xxx.

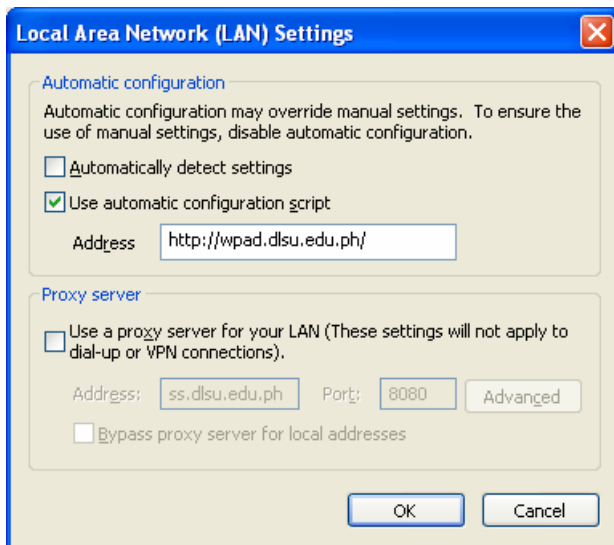
## **BROWSER SETTINGS**

### **Internet Explorer Configurations**

1. Click on **Tools > Internet Options > Connections > LAN Settings**



2. Type <http://wpad.dlsu.edu.ph> on the configuration script and click **OK** to save settings.



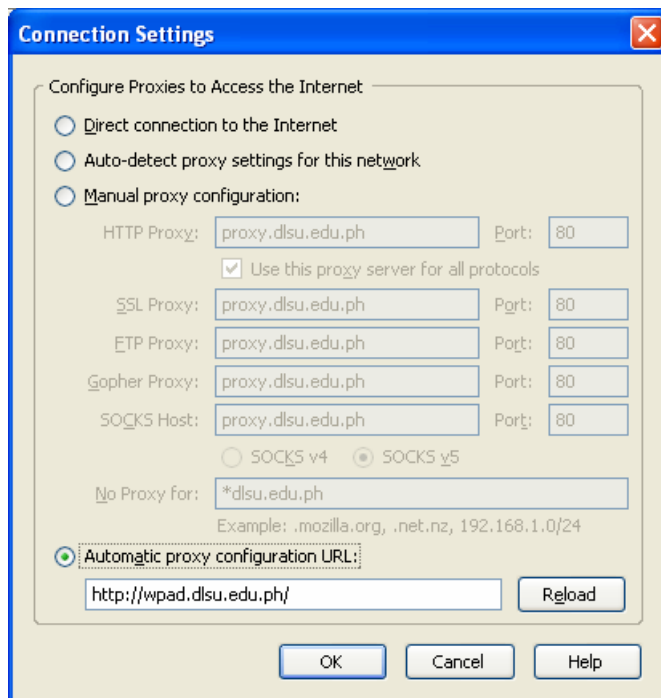
3. Open the **Internet Explorer** and enter the URL of the site you wish to visit.  
Enter your MLS account if the proxy requires an authentication.  
Username: <your MLS username>  
Password: <your MLS password>  
Domain: manila

## Mozilla Firefox Configurations

1. Click on **Tools > Options > Advanced >** and select **Network** tab



2. Type <http://wpad.dlsu.edu.ph> on the configuration URL and click **OK** to save settings.





3. Open the **Mozilla Firefox** and enter the URL of the site you wish to visit.

Enter your MLS account if the proxy requires an authentication.

Username: <your MLS username>

Password: <your MLS password>

Domain: manila